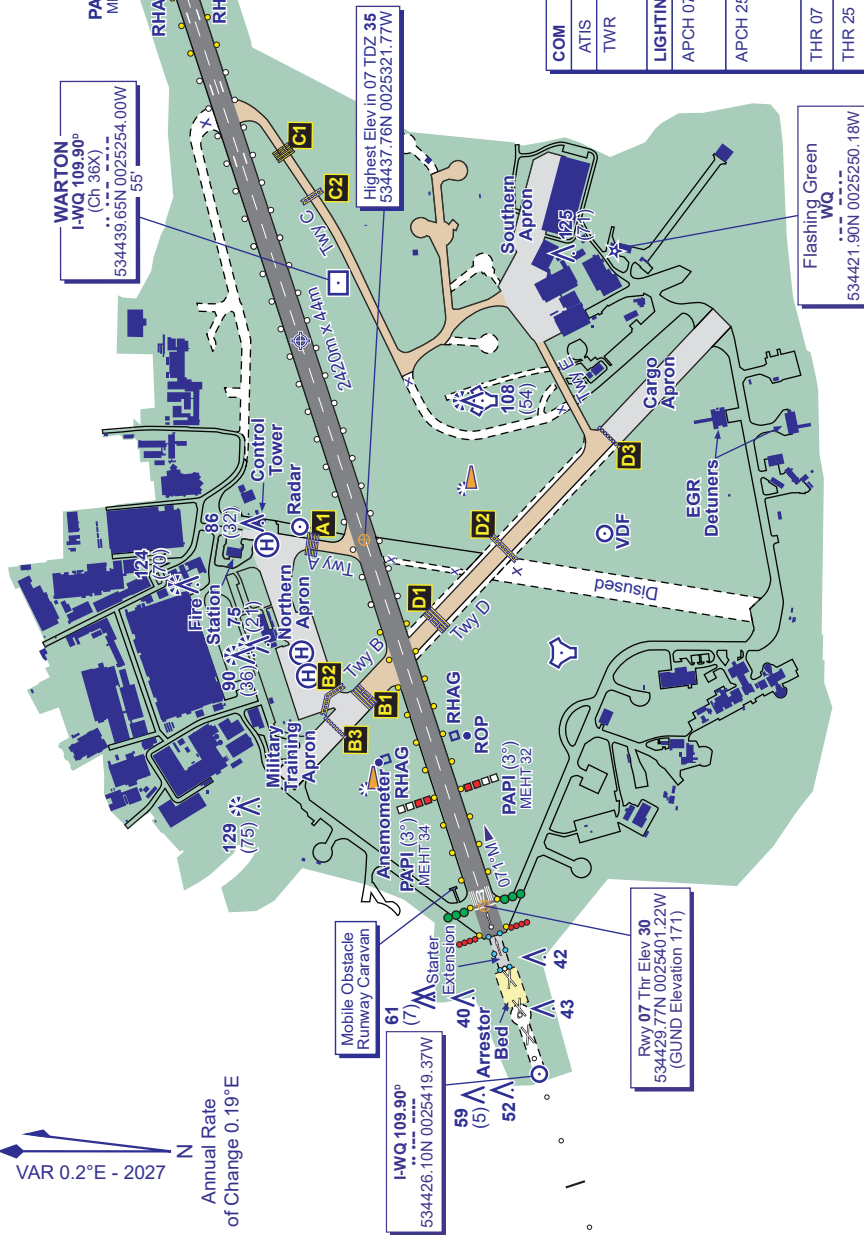


GUND (Geoid Undulation) = The height of the Geoid (MSL) above the Reference Ellipsoid (WGS 84) at the stated position.	
BEARINGS ARE MAGNETIC ELEVATIONS AND HEIGHTS ARE IN FEET	129 (75)
ELEVATIONS IN FEET AMSL HEIGHTS IN FEET ABOVE AD	129 (75)

VAR 0.2°E - 2027
N
Annual Rate
of Change 0.19°E



RUNWAY/TAXIWAY/APRON PHYSICAL CHARACTERISTICS			
APRON/RWY/TWY	SURFACE	PCN	PCR
RWY 07/25	Grooved Asphalt	47/F/CW/T	550/F/CW/U
Northern Apron	Concrete/Asphalt	42/F/CW/T	-
MTA	Concrete/Asphalt	42/F/CW/T	-
Southern Apron	Concrete/Asphalt	48/R/CW/T	-
Cargo Apron	Asphalt	42/F/CW/T	-
TWY A	Asphalt	37/R/CW/T	-
TWY B	Asphalt	42/F/CW/T	-
TWY C	Asphalt	28/F/CW/T	-
TWY D	Asphalt	42/F/CW/T	-
TWY E	Asphalt	28/F/CW/T	-

COM	WARTON TERMINAL INFO	
	ATIS	121.730
	TWR	130.805
LIGHTING	WARTON FIRE	
	WARTON FIRE	
	WARTON FIRE	
APCH 07	HI 1030 m C/L with 2 bars. Non-standard configuration, see EGNO AD 2.20.	
APCH 25	HI 879 m coded C/L with 5 bars. Non-standard configuration, see EGNO AD 2.20. Supplemented with LI red omni-d T-bar from bar 3 (for circling).	
THR 07	HI green W bars.	
THR 25	HI green with green W bars.	
RWY 07/25	HI bi-d edge with LI omni-d component. Last 600 m yellow caution. HI end lights red.	
TWY	TWY A & C green & yellow lead off C/L. TWY C green C/L apron to hold C2. TWY B green C/L apron to hold B1. Blue edge TWY A, B, D* & E. Stop Bars & Guard lights at A1, B1, C2, D2. * TWY D edge lights 8 m outside marked edge.	